

Intermediate Algebra Skill

Sketching Graphs Involving Horizontal Translation

Sketch the graph:

1) $y = (x - 2)^2$

2) $f(x) = (x + 3)^2$

3) $g(x) = (x - 1)^3$

4) $h(x) = (x + 2)^3$

5) $j(x) = |x - 4|$

6) $g(x) = |x + 1|$

7) $f(x) = \sqrt{x - 1}$

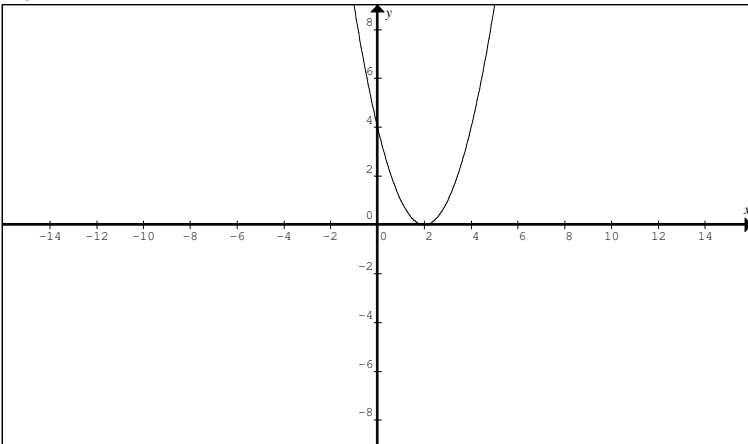
8) $T(x) = \sqrt{x + 2}$

9) $Q(x) = \frac{1}{x - 3}$

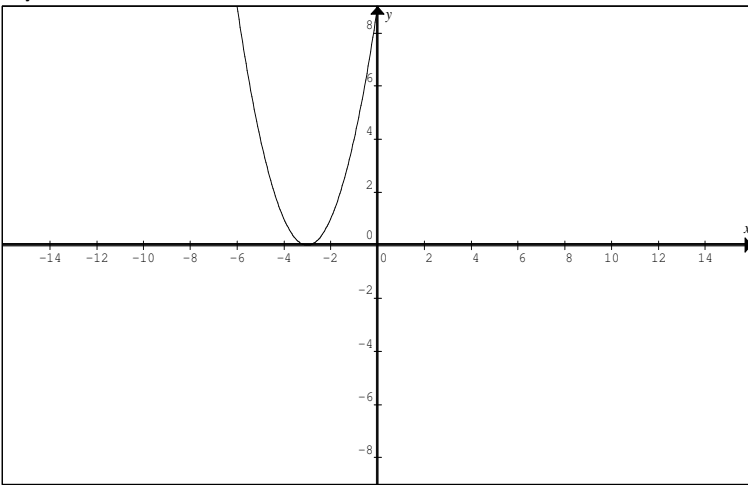
10) $H(x) = \frac{1}{x + 4}$

Answers to Sketching Graphs Involving Horizontal Translation

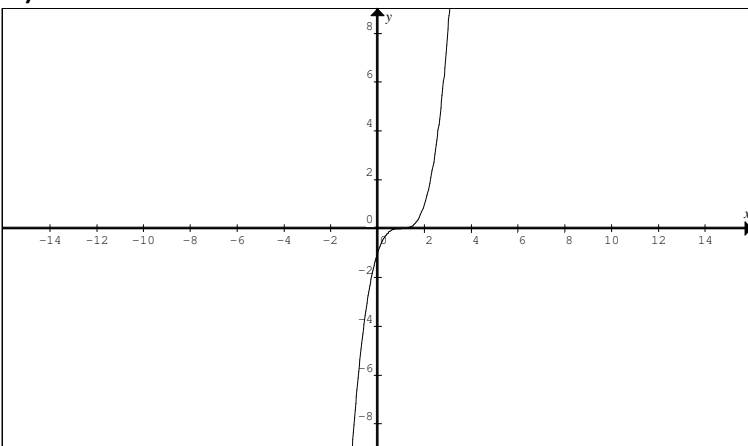
1)



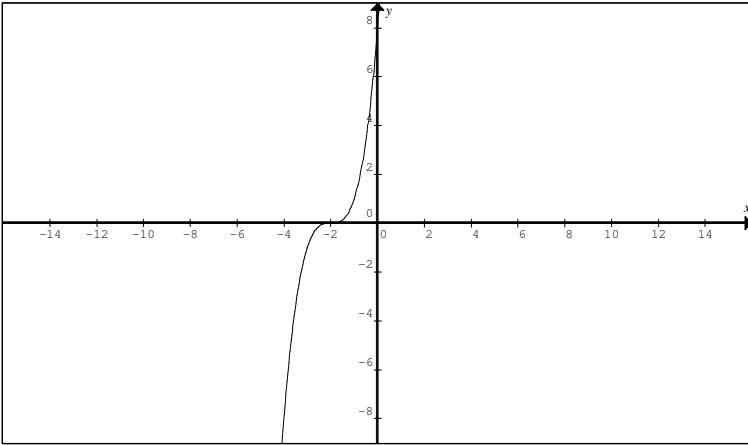
2)



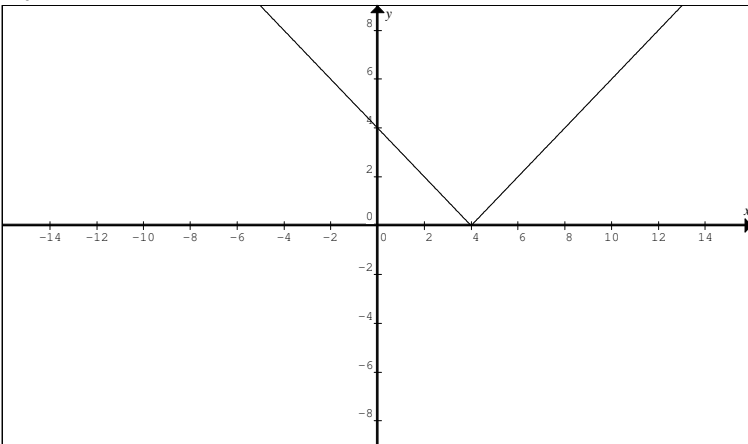
3)



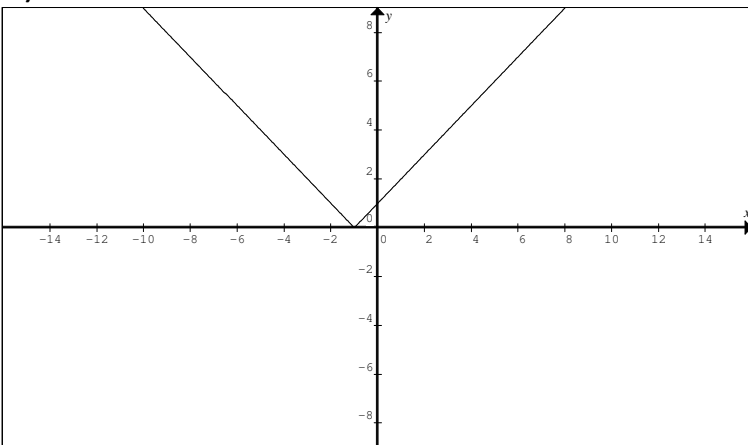
4)



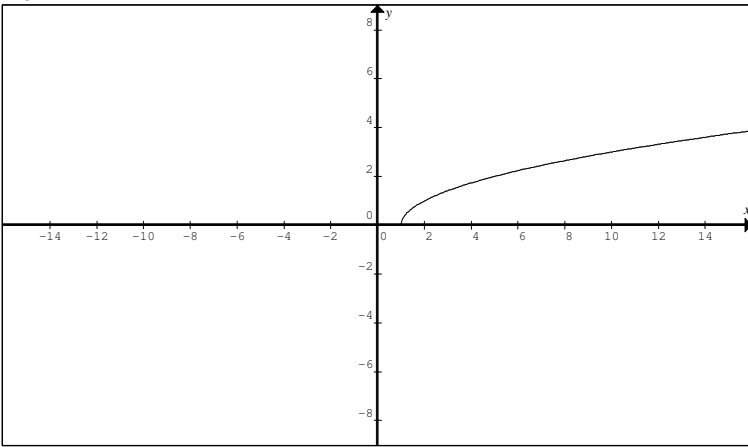
5)



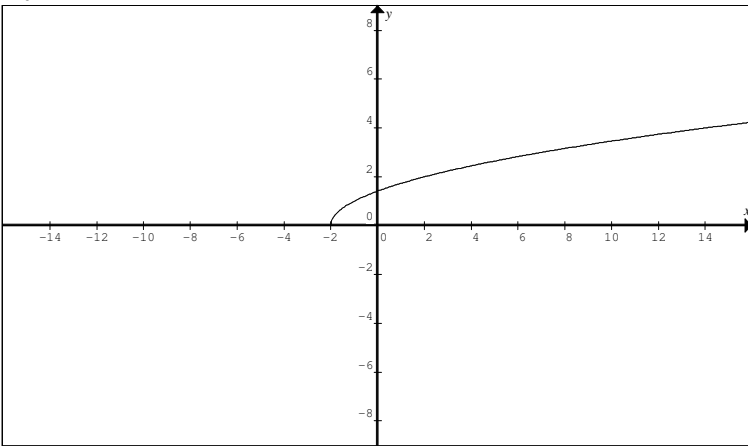
6)



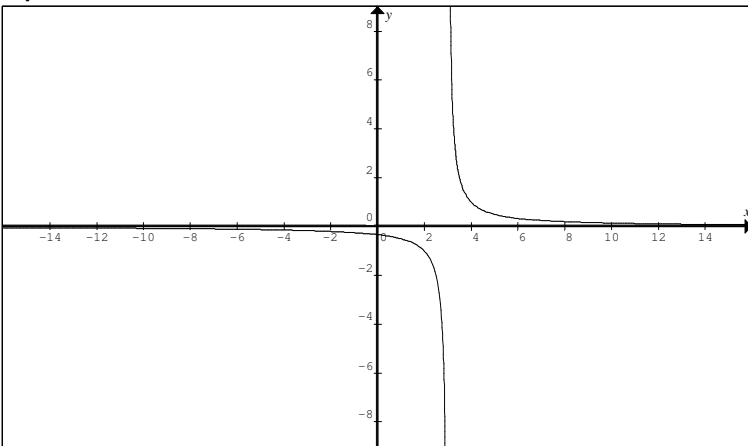
7)



8)



9)



10)

