



- Welcome Back to Returning Members and Welcome to New Members!
(→Pat Calder resigned at this meeting)
- Program Review
 - Departmental Completion
 - Chemistry/Physics
 - Psychology
 - Review of the Handbook & Process
- Faculty Hiring
 - Reporting Structure and Timeline for Hiring Process (see second page)
 - Update (→New form for position requests distributed at Department Council)
- New Programs
 - Study Away Programs
 - IPC Representative for their meetings (→Pete Parkin)
- Enrollments (past, present, & future)

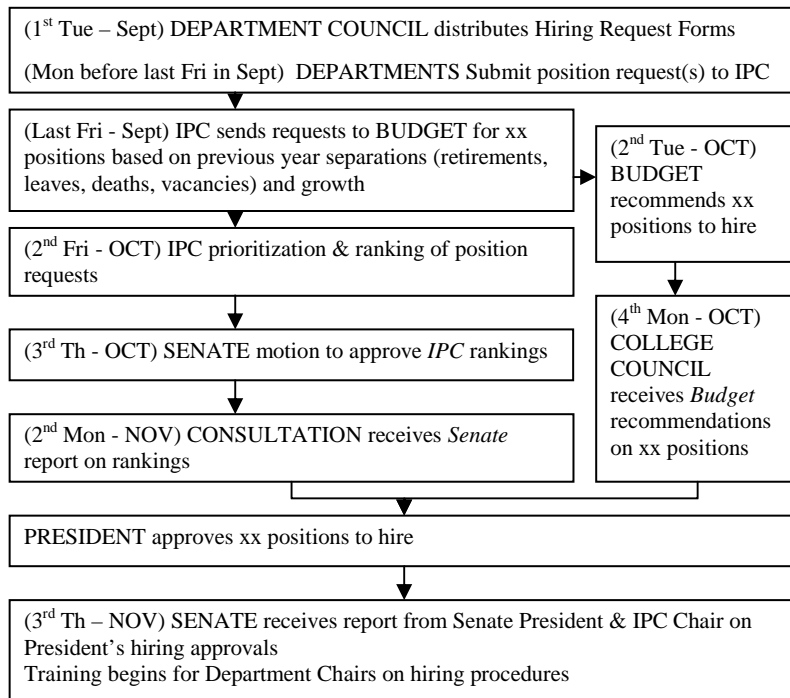
IPC 2006-7:

Pat Calder
Steve Castillo
Rose Drummond
Don Gauthier
Glenn Milner
Mary Ellen Pangonis
Pete Parkin
Joanne Waddell
Phyllis Yasuda
Al Zucker

Sally Raskoff
Shannon Stack
Carlotta Tronto
Janice Hollis
Resource:
Laurie Nalepa
Deborah Di Cesare
Dennis Reed
Duane Martin

Meetings:
Faculty Lounge 1:15
Sept 15
Oct 13
Nov 17
Dec 15

Timeline and Process of Faculty Hiring Requests



Membership Roster 2006-2007

NAME	TITLE	REPRESENTING	TERM EXPIRES
Rose Drummond	Faculty	Departmental Council	6/30/2009
Don Gauthier	Faculty	Departmental Council	6/30/2009
Al Zucker	Faculty	Departmental Council	6/30/2009
Steve Castillo	Faculty	Departmental Council	6/30/2008
Pete Parkin	Faculty	Departmental Council	6/30/2008
Phyllis Yasuda	Faculty	Departmental Council	6/30/2008
Glenn Milner	Faculty	Departmental Council	6/30/2007
Mary Ellen Pangonis	Faculty	Departmental Council	6/30/2007
Joanne Waddell	Faculty	AFT Faculty Guild	6/30/2008
Sally Raskoff*	Faculty	Academic Senate	6/30/2009
Pat Calder	Faculty	Academic Senate	6/30/2007
Shannon Stack	Academic Senate Pres.	Academic Senate	By position
Carlotta Tronto	V.P. Academic Affairs	College President	By position
Janice Hollis	Dean, Academic Affairs	College President	By position
	Student, ASU	Resource/ASU	6/30/2007
Laurie Nalepa	Dean, Academic Affairs	Resource/Admin.	By position
Deborah di Cesare	Dean, Academic Affairs	Resource/Admin.	By position
Dennis Reed	Dean, Academic Affairs	Resource/Admin.	By position
Duane Martin	Administrative Analyst	Resource/Admin	By position

*COMMITTEE CHAIR