

Intermediate Algebra Skill

Sketching Graphs Involving Vertical Translation

Sketch the graph:

1) $y = 5x + 1$

2) $f(x) = x - 2$

3) $g(x) = x^2 - 1$

4) $h(x) = 3 + x^2$

5) $j(x) = |x| - 2$

6) $g(x) = 3 + |x|$

7) $f(x) = \sqrt{x} - 1$

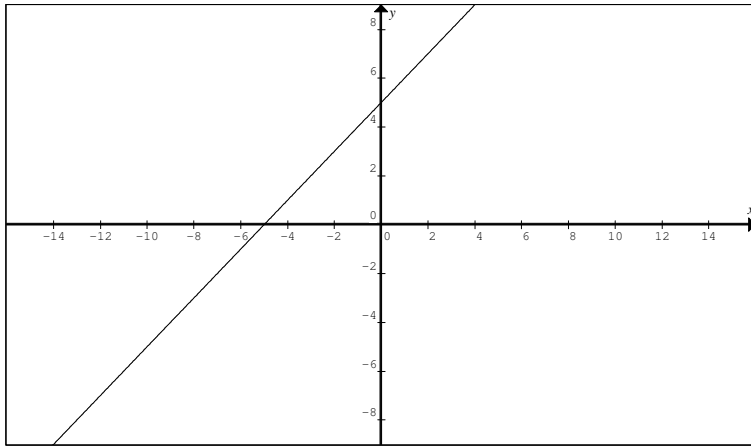
8) $T(x) = 1 + \sqrt{x}$

9) $Q(x) = \frac{1}{x} - 2$

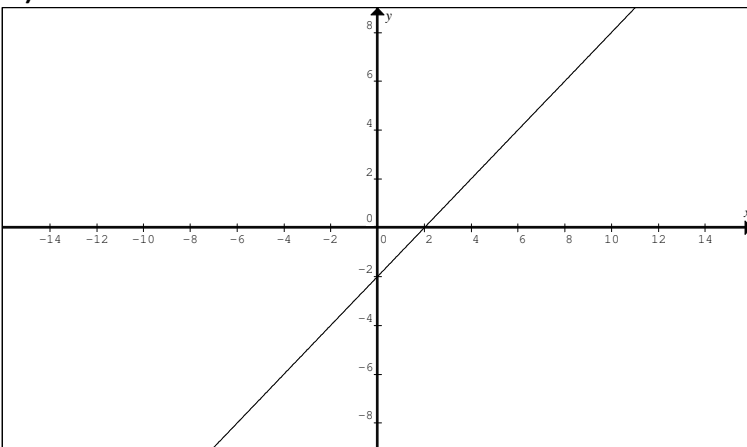
10) $H(x) = 3 + \frac{1}{x}$

Answers to Sketching Graphs Involving Vertical Translation

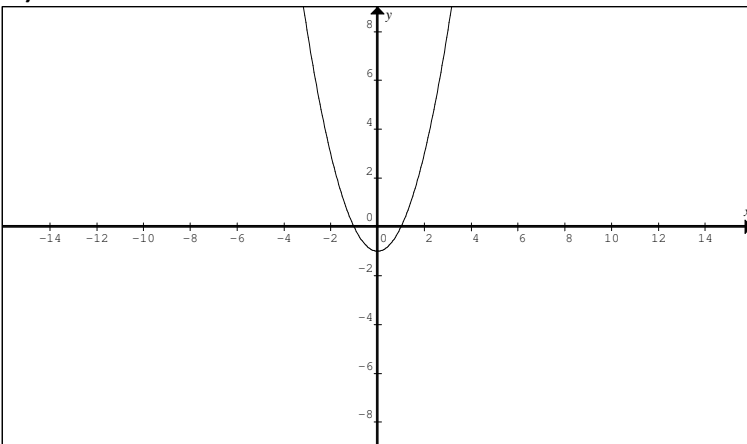
1)



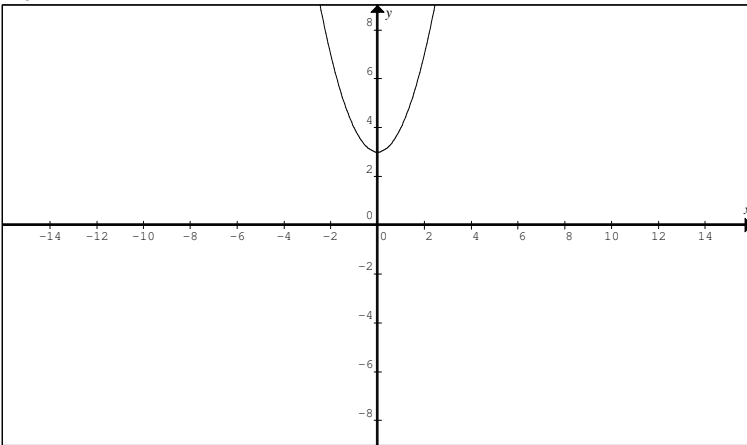
2)



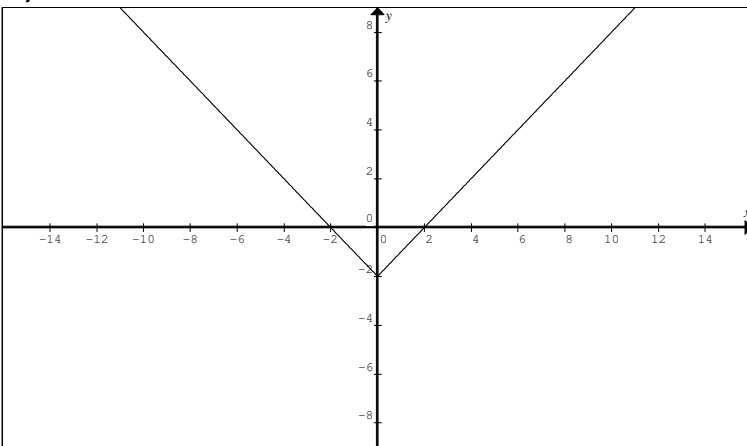
3)



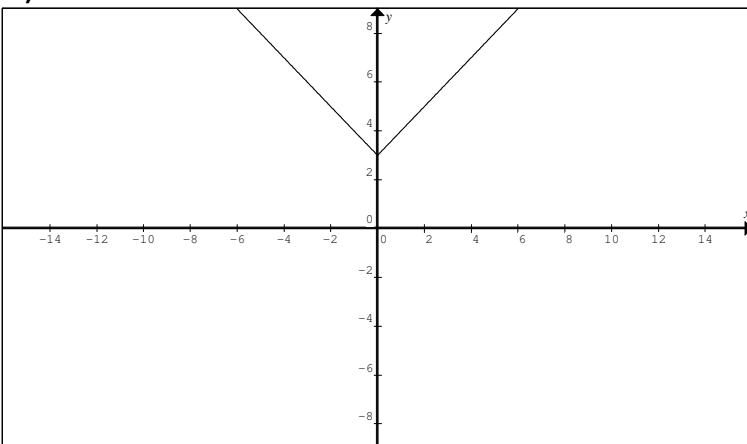
4)



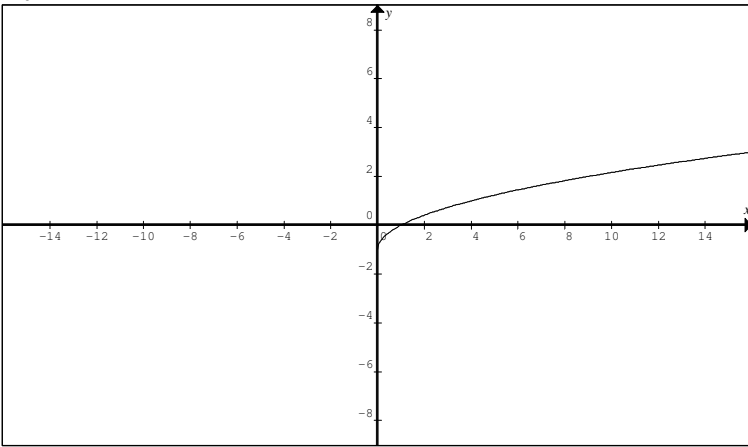
5)



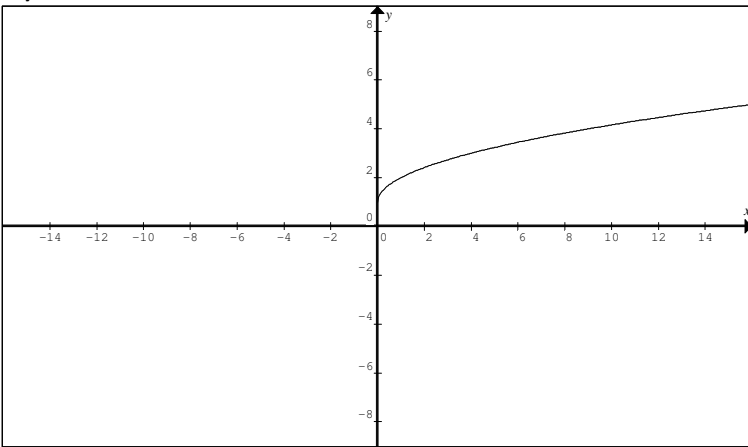
6)



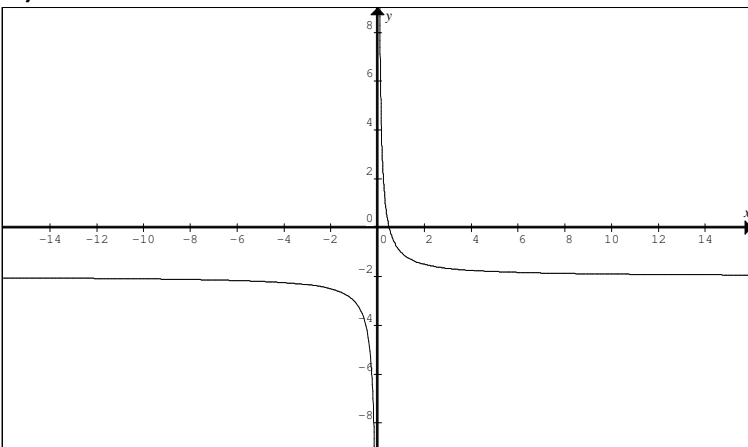
7)



8)



9)



10)

